

SWARCO McCain ENFORCER

RED LIGHT VIOLATOR DETECTION UNIT



The McCain Enforcer is a red light violator detection unit designed to help law enforcement agencies reduce the number of red light violations. According to the Department of Transportation, running red lights is the leading cause of urban collisions. Each year in the United States, red light violations result in roughly 1,000 deaths and over 150,000 injuries. The McCain Enforcer is an effective, low-cost, easy-to-install alternative to a red light camera that works toward the same goal — reduction of red light violations and safer streets for the public.



KEY BENEFITS

- Connects to existing signals with easy installation
- Offers visibility from hundreds of feet away
- Operates on the same voltage as signals equating to low power consumption
- Fully adjustable viewing angle
- Available in four colors

PRODUCT DESCRIPTION

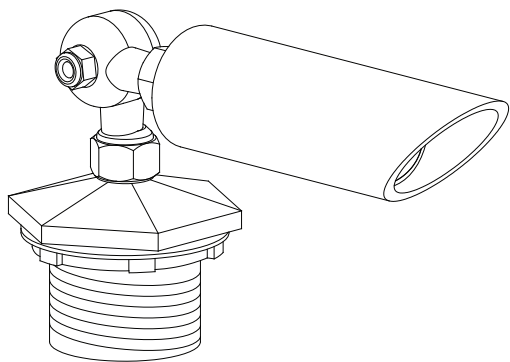
The McCain Enforcer is a small, highly directional LED light, that allows law enforcement to observe the status of a red light from a cross street. When the McCain Enforcer is illuminated it indicates a red light so law enforcement can easily monitor motorists running the light.

The McCain Enforcer's high-intensity LED's are mounted on a circuit board that is encased in a weather resistant, tubular housing allowing it to operate in any environment. An integrated sun visor promotes visibility in direct sunlight. The housing is attached to a standard one-and-a-half-inch NPT ornamental cap that can be mounted in a variety of positions. Two 15-foot, color-coded (red and white) leads connect to the existing red light voltage terminals, allowing the Enforcer to indicate the exact state of the red light.

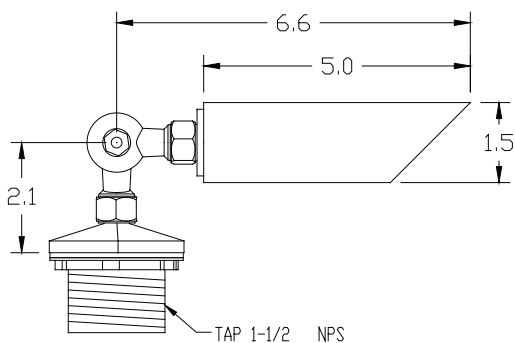
The Enforcer is available in four LED colors: red, amber, white, and blue.

McCain ENFORCER

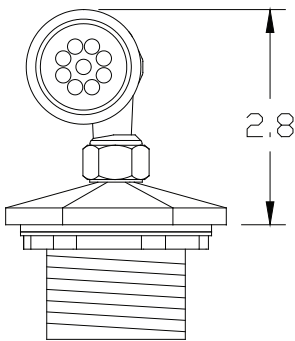
3-D



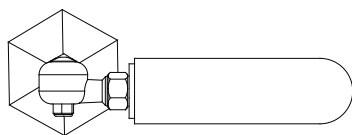
SIDE



FRONT



TOP



STANDARD FEATURES

- LEDs mounted on a circuit board
- Constant current driving electronics
- Electronics sealed in weather-resistant enclosure
- 360° horizontal and 215° vertical adjustment
- Ornamental mounting cap with gasket, washer, and locking nut
- In-line fuse holder
- 15' wire leads

MOUNTING

Mounting cap fits the top port of the signal housing or any other 1-1/2" NP straight-thread fitting.

The elbow/tube combination may be removed from the cap and reinstalled by drilling a hole to accommodate a 1/2" thread size in any convenient location, such as the side of a terminal housing, that has a red-light wire connection point within the lead length of the McCain Enforcer (15').

GENERAL SPECIFICATIONS

Dimensions ¹ :	Housing: 5" long x 1.5" diameter Length: 6.6" Height: 2.8"			
Material:	6061-T1 aluminum, 0.125" wall thickness			
Finishes:	Powder coated black			
Input Voltage:	20 VAC to 150 VAC; 40 Hz to 100 Hz			
Power:	7.2 VA (at 110 VAC)			
Mounting:	Standard 1.5" NPS ornamental cap/elbow			
Sun Visor:	Integral part of housing			
Environmental:	Operating Temperature: -40°C to +85°C Humidity: 0 to 95% (non-condensing)			
Weight:	1.3 lbs			
LED'S	RED	AMBER	WHITE	BLUE
Technology:	AlInGaP		InGaN	
Viewing Angle ² :	23°	30°	23°	15°
Wavelength ³ :	630 nm	591 nm	x=0.31; y=0.31 ⁴	470 nm
Part Numbers ⁵ :	M65177	M69378	M65448	M65229

OPTIONS

- Custom housing finishes and colors
- Custom cable lengths

¹Dimensions rounded to the nearest 0.1"; length defined as distance to center of elbow; height defined as distance to cap bottom

²20°

³Peak λ; all values @ 20 mA forward current

⁴CIE 1931

⁵All 110 VAC