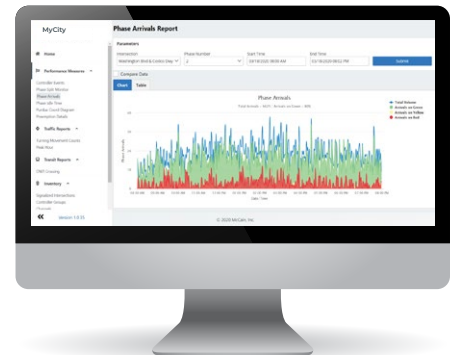


# SWARCO MYCITY SPM

## SIGNAL PERFORMANCE MEASURES

### A MYCITY SOLUTION

MyCity Signal Performance Measures (SPM)<sup>1</sup>, a component of MyCity, utilizes logs and real-time traffic information to display data. MyCity SPM reports meet and exceed the insights available within the open source SPM solution. These reports deliver significant advancements in the user experience, decision making, security, and extensibility needed to implement effective signal timing improvements. Additionally, the reports combine several relevant signal performance measures that empower signal timing decisions.



### KEY BENEFITS

- Zoom and scroll through large data sets
- Produce options for visualizing and controlling complexity of information and statistics
- Compare real-time performance against historical averages or selected date/times
- View signal controller logs and vehicle count detection
- Provide web-based reporting solution deployed on agency owned resources
- Allow reports and data to display without an internet connection

### PRODUCT DESCRIPTION

With MyCity SPM users can easily access web-based reports with interactive features that enable users to zoom in and scroll through chart data for deeper analysis of specific events and/or time frames without resetting chart parameters. Easily compare two different sets of data, like intersection and date/time approach. The wizard-based configuration dialogues provide ease of use and satisfy all requirements when operating in NEMA, CalTrans, and ATC environments.

Additionally, MyCity SPM collects log data stored by traffic signal controllers and provides superior monitoring and control access from agency LAN, local traffic signal controllers, and remote locations via Internet. The advanced functionality of the software allows multiple operators to access reports simultaneously.

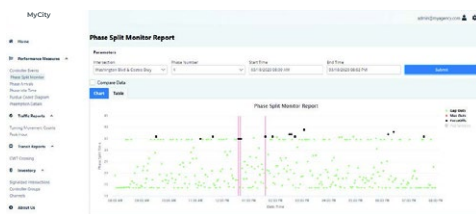
MyCity SPM utilizes the authorization, authentication, and configuration database of MyCity.

MyCity

# MYCITY SPM

MyCity SPM utilizes logs and live traffic data to enhance reports, aiding user experience, decision-making, security, and signal timing adaptability.

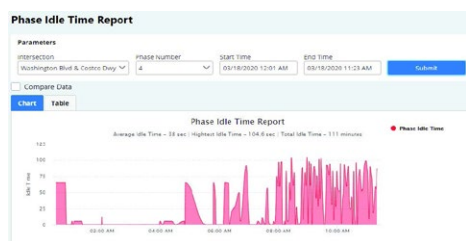
## PHASE SPLIT MONITOR REPORT



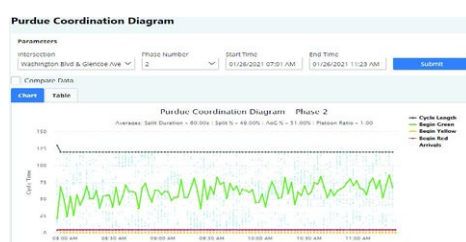
## PHASE ARRIVALS REPORT



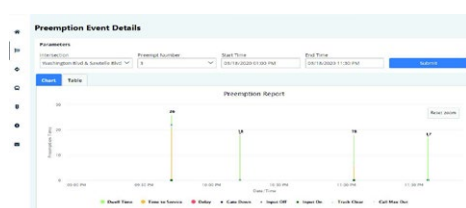
## PHASE IDLE TIME REPORT



## PURDUE COORDINATION DIAGRAM REPORT



## PREEMPTION DETAILS REPORT



<sup>1</sup>Formerly known as Transparity® SPM

[www.swarco.com/mccain](http://www.swarco.com/mccain)

SWARCO reserves the right to make changes at any time in order to supply the best product possible.

©SWARCO McCain, Inc. Updated 04/12/2024

## SIGNAL PERFORMANCE MEASURE REPORTS

### Controller Events List Report

Provides users with the ability to review high-resolution event data chronologically.

### Phase Split Monitor Report

Combines the Phase Termination, Split Duration, Pedestrian Service/Delay, Split Failure, and Green Occupancy Ratio (GOR) / Red Occupancy Ratio (ROR) % performance measures in a single report in order to empower signal timing decisions.

### Phase Arrivals Report

Compares the volume of vehicles approaching the green interval versus the red interval of select phases. This report provides the total approach volume, Arrival on Green %, and area chart to illustrate arrivals on green versus red for each cycle. This is a key report in analyzing the performance of synchronized modes of operation (i.e. coordination, adaptive, or peer-to-peer synchronization).

### Phase Idle Time Report

Illustrates the wait time experienced by the first vehicle to arrive on red before service of the green interval.

### Purdue Coordination Diagram Report

Plots vehicle arrivals against the phase state (green, yellow, or red) as well as the vehicles per hour of the approach. The report includes Arrival on Green %, bandwidth efficiency % (percentage of the cycle that was green for the given approach), and Platoon Ratio.

### Preemption Details Report

Plots the times of preempt requests, preempt service and details pertaining to the preemption operation, including time to service, dwell time, entry delay, end call, call max out, track clear, and gate down.

## TRAFFIC REPORTS

### Turning Movement Counts Report

Plots the volume of each approach including through movements. Users may elect to display the lane volume and/or total volume (all lanes).

### Peak Hour Report

Automatically identifies the peak hours and volumes for A.M., Midday, and P.M. day periods.

## INVENTORY REPORTS

- Signalized Intersections Report
- Controller Groups Details Report
- Channel Details Report

## CUSTOMER SUPPORT

SWARCO McCain's ITS Solutions team provides personalized support, system selection, integration, and ongoing maintenance. Other service options include dedicated online user groups and tailored trainings.

