

SWARCO McCain CONNECTICUT

FEATURED DEPLOYMENT

CITY OF GREENWICH



SWARCO McCain supplies Greenwich, CT with a state-of-the-art adaptive signal system and low-voltage ATC cabinets

OVERVIEW

Greenwich, Connecticut, the largest town on the state's coast and twice the size of Manhattan, implemented SWARCO McCain's cutting-edge MyCity Adaptive¹ signal system and low-voltage ATC Cabinets. This initiative is geared towards reducing travel time and congestion while enhancing air quality and traffic flow. It represents the state's groundbreaking adoption of sophisticated traffic signal technology.

LOCATION

Greenwich is a town in southwestern Fairfield County, Connecticut with an estimated population of 63,518. The town is bordered to the West by Port Chester, Rye Brook, and White Plains, NY. This coastal town is the largest on Connecticut's 'Gold Coast' due to its many hedge funds and large financial service companies.

THE CHALLENGE

The stretch of I-95 leading up to Exit 3 regularly became congested, as it is traveled on by approximately 35,000 vehicles daily. Many cars were slowing down to take the exit ramp and turn onto Arch Street as they headed into downtown Greenwich. The city needed something more robust than what traditionally timed signals had to offer.

SOLUTION

To address the issue, the city partnered with Northeast Signal and SWARCO McCain. MyCity Adaptive was deployed at five intersections along Arch Street, equipped with video detection processors that transmit signals to the traffic controller for responsive actions. The intersections were also equipped with McCain 352i low-voltage ATC Cabinets, consuming 66% less energy than traditional cabinets on the market.

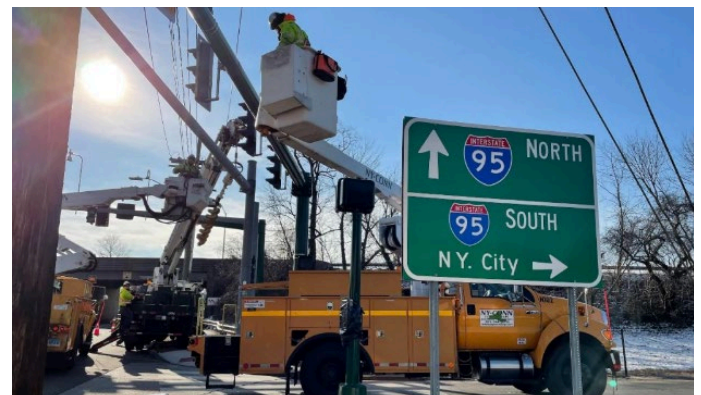
MyCity Adaptive optimizes signal timing on the fly based on current demand and system capacity, moving vehicles faster and more efficiently than pre-programmed signal timing plans and operations. With this technology continuously monitoring road conditions, traffic flow is dynamically adapted according to daily traffic patterns. The adaptive signals were included in a broader initiative that secured \$2.75 million in funding from the Federal Highway Administration's Congestion Mitigation and Air Quality (CMAQ) program.

BENEFITS OF MYCITY ADAPTIVE

- Adjust to real-time traffic demand
- Reduce stops, delays, and travel time
- Analyze arterial performance with high-resolution data reports

KEY DELIVERABLES

In addition to MyCity Adaptive, the five intersections were equipped with McCain 352i Low Voltage DC ATC Cabinets, using 66% less energy than traditional ones. These cabinets housed state-of-the-art technology essential for managing signalized intersections, including the Cabinet Malfunction Unit (CMU), Traffic Controller (CU), and Video Detection Processors. The project was finalized in early 2022.



SWARCO McCain signals being installed in Greenwich, CT

¹Formerly known as Transparency[®] Adaptive
©SWARCO McCain, Inc. Updated 06/11/2024

