



SUCCESS STORIES

ADAPTIVE SYSTEM, CASA GRANDE

EMPOWER: 2023 Channel Partner Summit

Scott Clark
Clark Transportation Solutions

CITY OF CASA GRANDE

- Manufacturing, logistics, health care, retail and commercial hub for Pinal County conveniently located between the state's major metropolitan areas of Phoenix and Tucson.
- Casa Grande has thousands of acres of developable land in its Industrial Corridor, pre-zoned for industrial uses and available at a fraction of the cost of metro-area lands.
- Connectivity plays a big role in why companies choose Casa Grande. It is the only community in the state directly served by two major interstates (I-8 and I-10)



PROJECT TIMELINE

2018 Develop scope of Florence Blvd. Adaptive project

2019 Present project to City Council

2019 Casa Grande advertises JOC contract and selects Clark Transportation

2020-2022 Communications deployment

2022-2023 Central system/adaptive deployed

2023 Project completed

PROJECT SCOPE

McCain Transparency

HomeC2C

TimingGroupsData CollectorsMap DisplayArterialReportsLogsSPMEventsSchedulesTasksFXSpecial FunctionsChar

Devices & DisplaysReports & LogsManagement

Device Explorer

+ Browsable Devices (0)

+ Detector Stations (0)

+ Field Masters (0)

+ Ramp Controllers (0)

+ Sign Controllers (0)

- Traffic Controllers (11)

Type filter

+ Florence Blvd & Arizona Rd

+ Florence Blvd & Colorado St

+ Florence Blvd & Henness Rd

+ Florence Blvd & Peart Rd

+ Florence Blvd & Pottebaum Ave

+ Florence Blvd & Pueblo Dr

+ Florence Blvd & Trekeil Rd

+ Florence Blvd & Walmart Ent/...

+ Peart Rd & Cottonwood Ln

+ Peart Rd & Kortsen Rd

+ Peart Rd & McMurray Blvd

Web Map Display

	Ø	Last	Used	Min	Demand	Trend	Det	Issu
	1	17	18	13	↑	↑	OK	20
	2	55	55	40	↑	↑	OK	59
	3	16	16	12	↑	—	OK	19
	4	45	37	45	↓	↓	OK	45

McCain Transparency

HomeC2C

TimingGroupsData CollectorsMap DisplayArterialReportsLogsSPMEventsSchedulesTasksFXSpecial FunctionsChannelsAlarmsBroadcast Time/Date

Devices & DisplaysReports & LogsManagementCommunications

Device Explorer

+ Browsable Devices (0)

+ Detector Stations (0)

+ Field Masters (0)

+ Ramp Controllers (0)

+ Sign Controllers (0)

- Traffic Controllers (11)

Type filter

+ Florence Blvd & Arizona Rd

+ Florence Blvd & Colorado St

+ Florence Blvd & Henness Rd

+ Florence Blvd & Peart Rd

+ Florence Blvd & Pottebaum Ave

+ Florence Blvd & Pueblo Dr

+ Florence Blvd & Trekeil Rd

+ Florence Blvd & Walmart Ent/...

+ Peart Rd & Cottonwood Ln

+ Peart Rd & Kortsen Rd

+ Peart Rd & McMurray Blvd

Web Map DisplayComm Error LogSystem LogsSchedulesCommand Profile Display - Florence Blvd Adaptive 2

Command Profile

Florence Blvd Adaptive 2

Start Date10/17/2022

Start Time07:12 AM

Duration1 hour

DisplayCycle Length

- Diagram

- Data

Master Cycle Zero

10/17/2022 8:10 AM -07:01

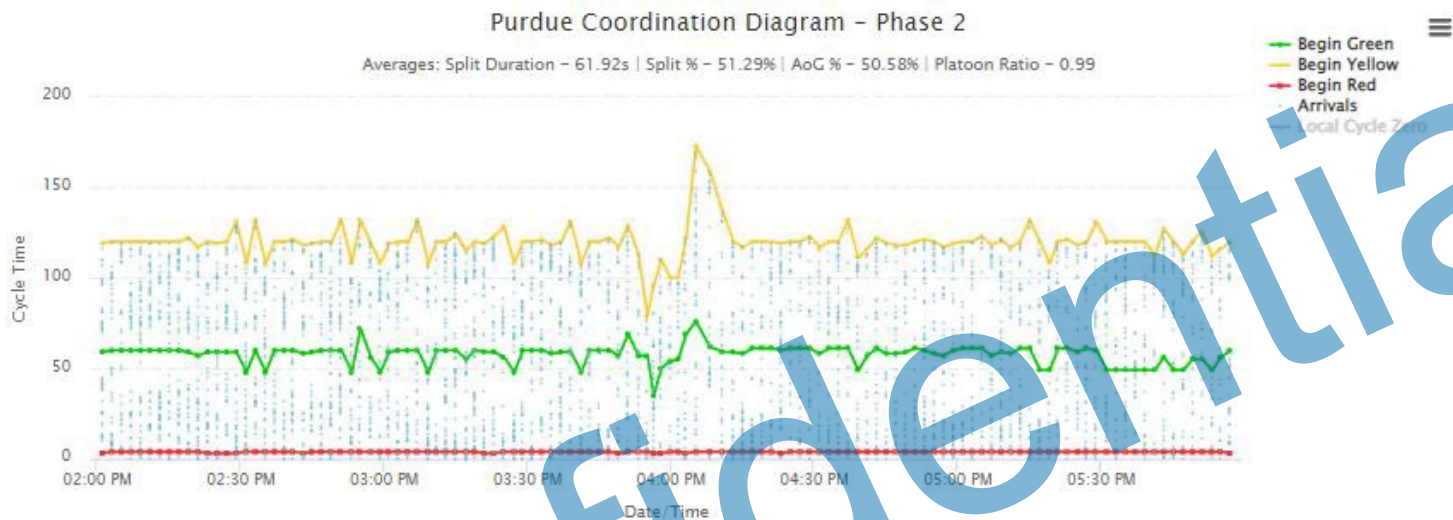
Calculated Pattern: 5 / 2B

Calculated Cycle Time (sec): 143

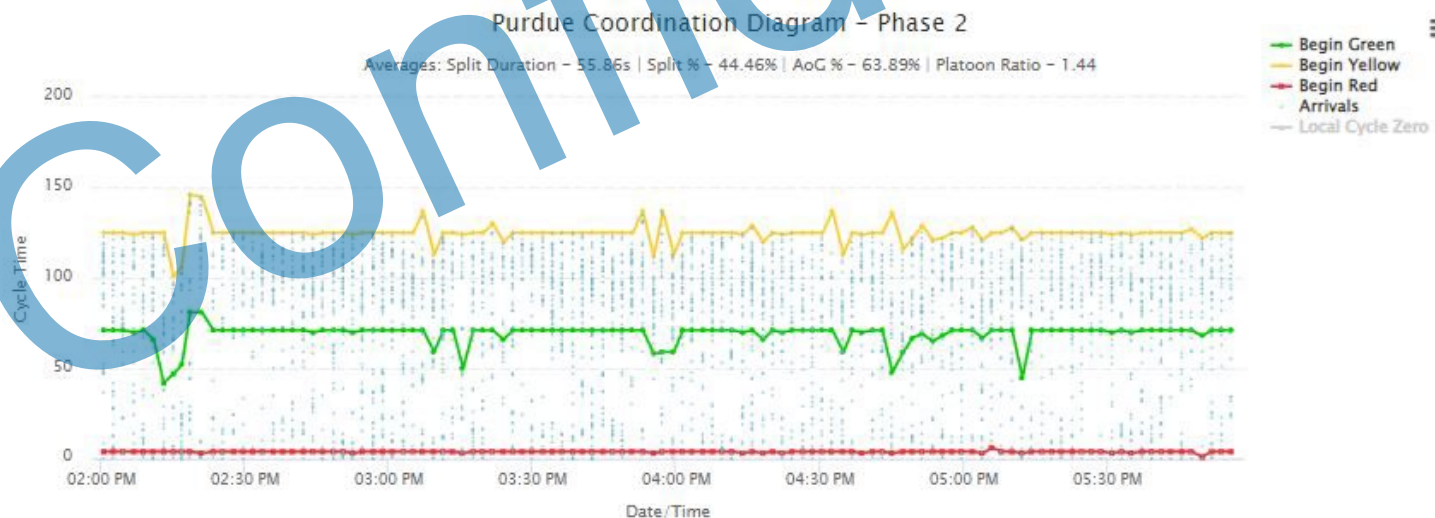
Controller	Request	Critical	Transition	Preempt	Offset	Next Offset	Status
Florence Blvd & Arizona Rd	145	False	True	False	67	67	Active
Florence Blvd & Trekeil Rd	123	False	True	False	73	73	Active
Florence Blvd & Peart Rd	127	False	False	False	0	0	Active
Florence Blvd & Walmart Ent/Ba...	126	False	True	False	77	77	Active
Florence Blvd & Colorado St	124	False	True	False	142	142	Active
Florence Blvd & Pueblo Dr	125	False	True	False	80	80	Active
Florence Blvd & Pottebaum Ave	124	False	True	False	1	1	Active

FLORENCE BLVD & PEART RD PROGRESSION ANALYSIS

Coordination



Adaptive



FLORENCE BLVD & PEART RD PROGRESSION ANALYSIS

Eastbound				
Coordination				
Friday 10/07/22				
KPI	AM	MD	PM	
AoG	no data	no data	37.5%	
PR	no data	no data	52.1%	
Saturday 10/08/22				
KPI	AM	MD	PM	
AoG	25.0%	36.8%	28.1%	
PR	25.3%	47.9%	31.8%	
Sunday 10/09/22				
KPI	AM	MD	PM	
AoG	28.9%	27.9%	25.8%	
PR	26.1%	29.4%	28.8%	
Monday 10/10/22				
KPI	AM	MD	PM	
AoG	18.3%	34.6%	35.5%	
PR	16.1%	44.6%	43.2%	
Adaptive				
Friday 10/14/22				
KPI	AM	MD	PM	
AoG	no data	no data	55.4%	
PR	no data	no data	76.0%	
Saturday 10/15/22				
KPI	AM	MD	PM	
AoG	31.6%	58.1%	63.4%	
PR	41.4%	74.7%	76.3%	
Sunday 10/16/22				
KPI	AM	MD	PM	
AoG	40.4%	50.0%	58.3%	
PR	38.2%	77.4%	86.5%	
Monday 10/17/22				
KPI	AM	MD	PM	
AoG	31.5%	48.1%	54.1%	
PR	57.1%	79.2%	63.9%	
Change				
KPI	AM	MD	PM	
AoG	no data	no data	47.7%	↑
PR	no data	no data	45.9%	↑
Saturday 10/15/22				
KPI	AM	MD	PM	
AoG	26.4%	57.9%	125%	↑
PR	63.6%	55.9%	140%	↑
Sunday 10/16/22				
KPI	AM	MD	PM	
AoG	39.8%	72.2%	126%	↑
PR	46.3%	163%	200%	↑
Monday 10/17/22				
KPI	AM	MD	PM	
AoG	72.1%	39.0%	52.4%	↑
PR	255%	77.6%	47.9%	↑

Avg. Arrivals on Green Performance Improvement: 65.85% ↑

Avg. Green Time Efficiency Improvement: 109.52% ↑

DEPLOYING ADAPTIVE IN RURAL COMMUNITY

- Getting from vision to purchase order
- What contract vehicle should you use?
- Expect changes
 - Staff changes
 - Development agreement changes
 - Scope changes
 - Signal timing
- How to agree on expectations?

WORKING WITH ITS SOLUTIONS GROUP

- ITS Solutions during
- Expect changes
 - Proposal/capture
 - Project deliverables
 - Project deployment
 - Training
- Resources of team

Confidential

PROJECT TAKEAWAY

- Transparency Adaptive is not a black box to traffic engineer
- Understand what is important to the agency
- Deliver what is important
- Plan big and implement in smaller phases
- Transparency Adaptive improves travel time and reduces delay

Confidential



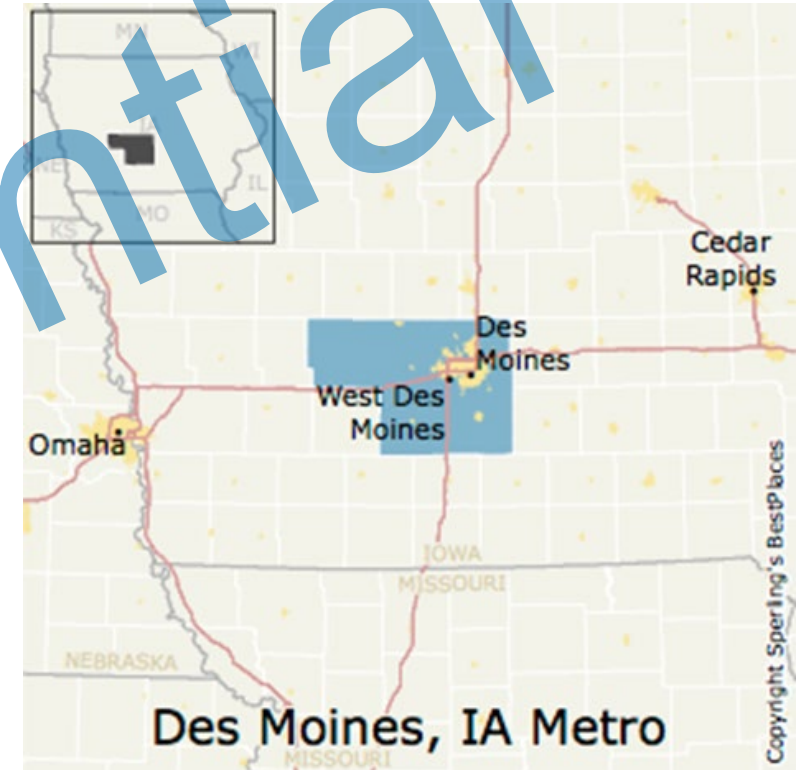
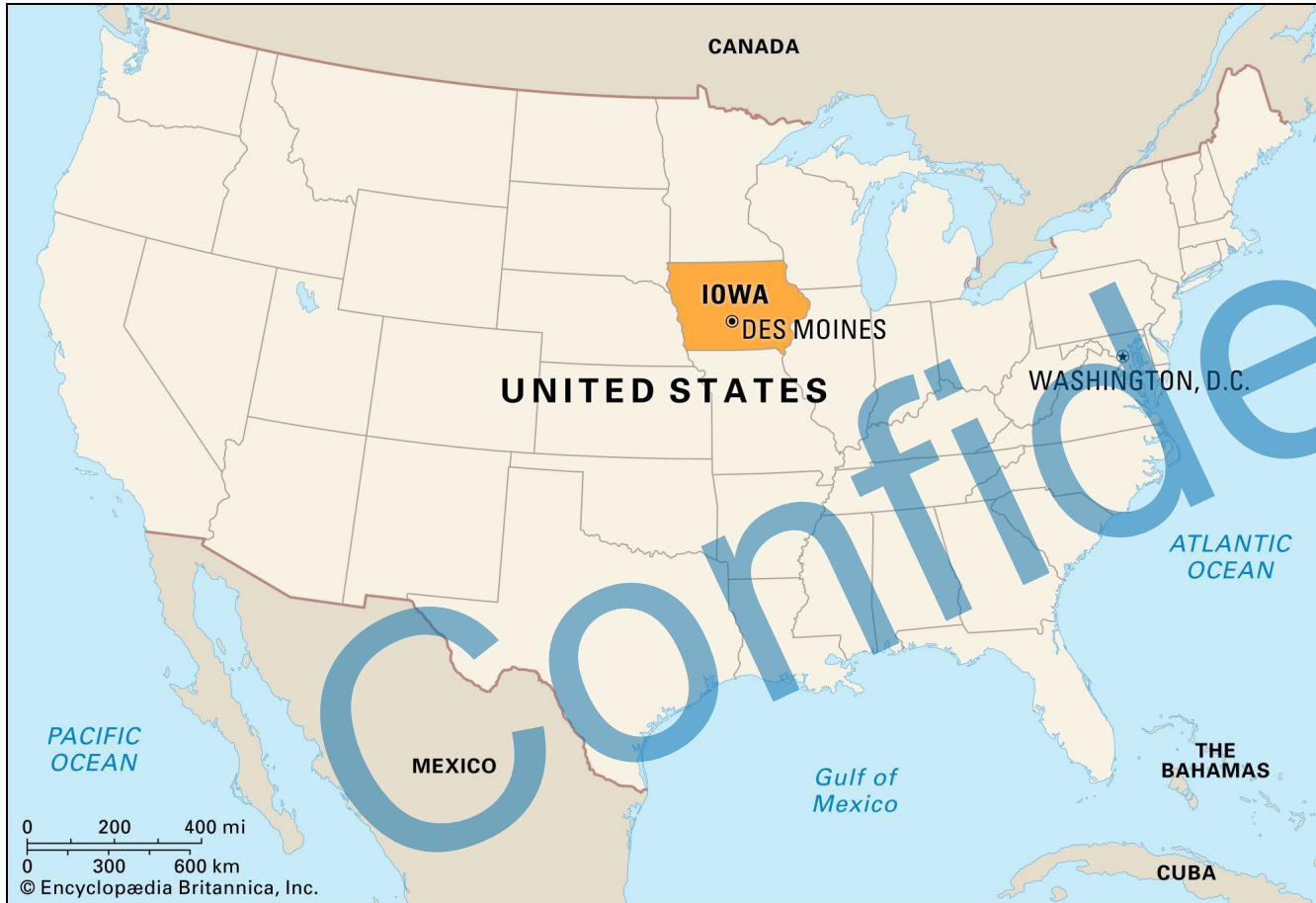
SUCCESS STORIES

ATC CABINETS, WEST DES MOINES

EMPOWER: 2023 Channel Partner Summit



LOCATION







City Population 70,000

- Top 17% of fastest-growing cities in the country
- Large Shopping Center
- Athene Headquarters
- Wells Fargo Facility
- Hy-Vee Headquarters

Des Moines Metro Population 700,000

- Metro area Number one spot for US insurance companies
- Large server farms
 - Facebook
 - Amazon
 - Microsoft





STAFF

4 Traffic Signal Signal Technicians

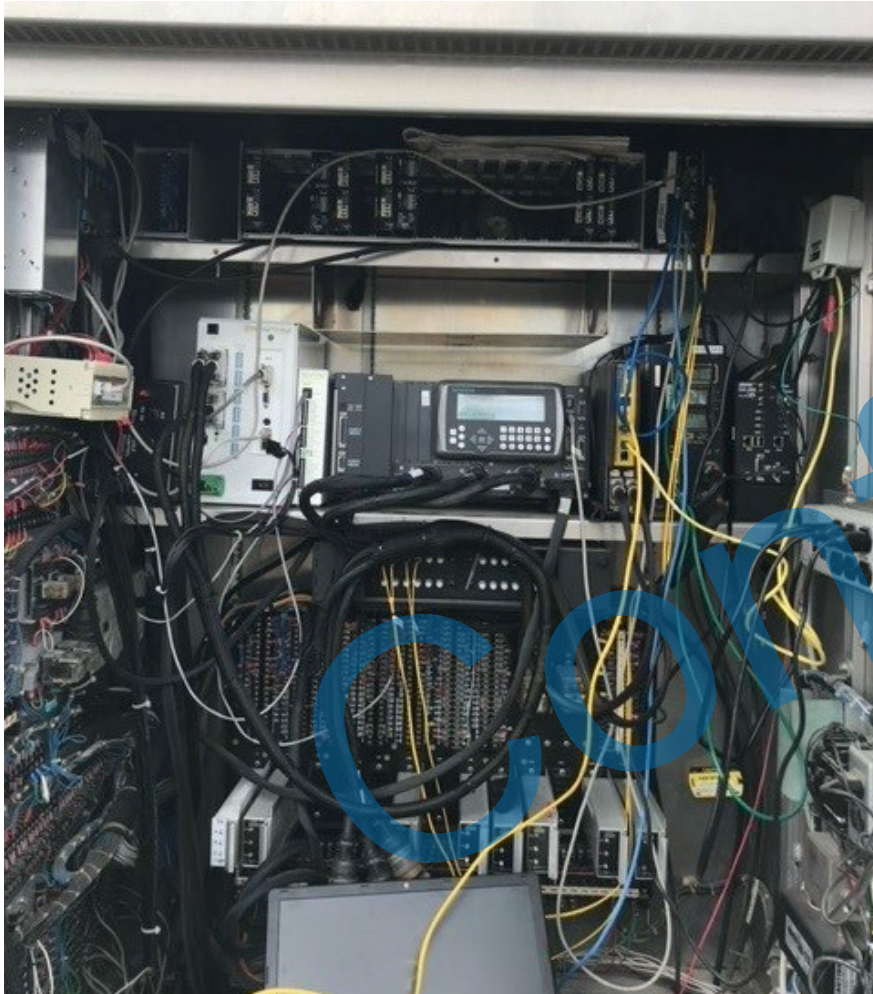
- Manage Signals
- Pedestrian Crossings
- School zones
- Signage
- Pavement markings
- Snow removal

1 Principal Engineer

- Long history in the traffic industry
- Highly respected in the state of Iowa
- Grant guru
- Progressive thinking



MIGRATION FROM TS1 CABINETS - ATCC

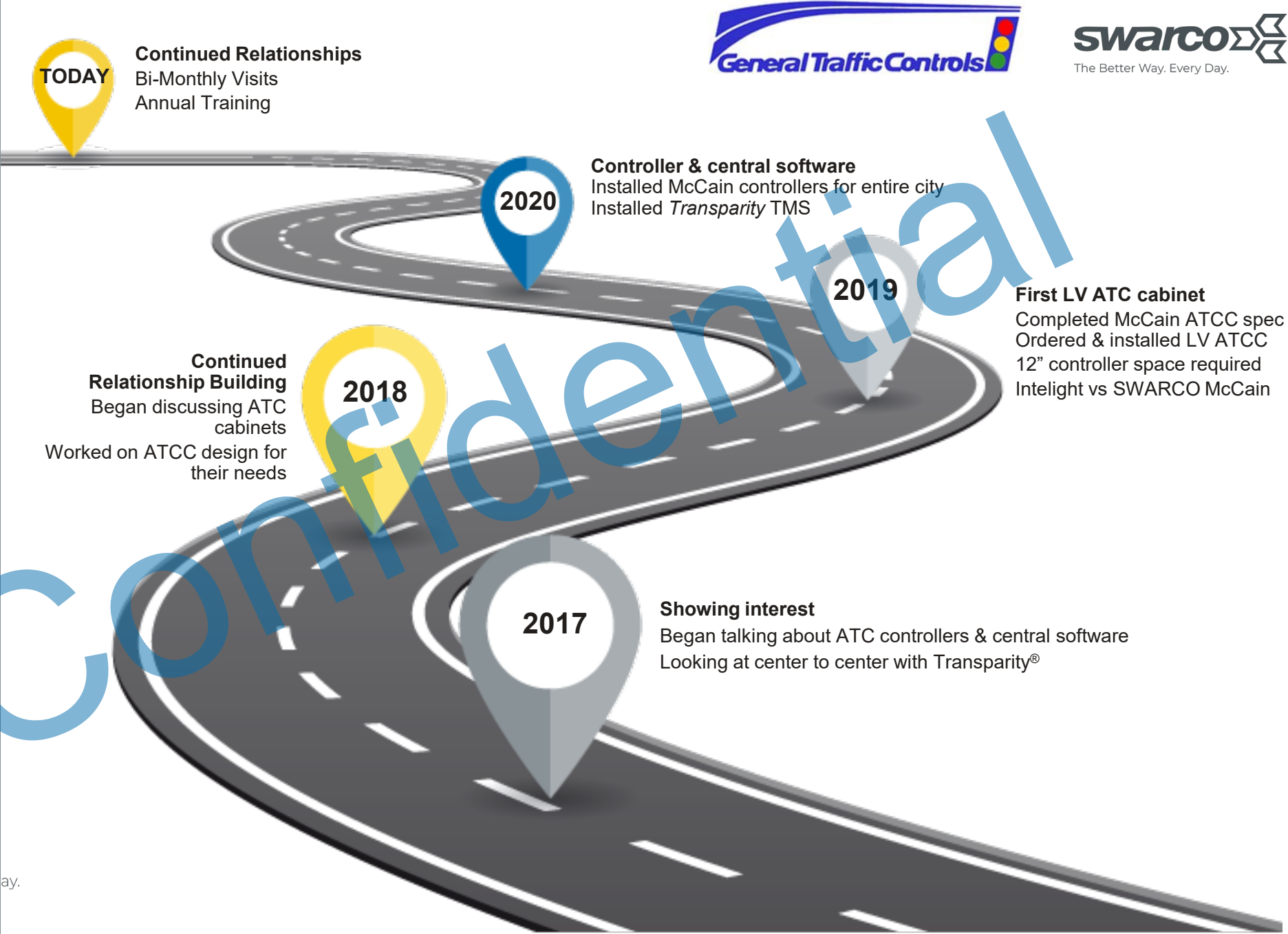


- 130 signalized intersections
- 100% connectivity
- Siemens M40's, M50's, M60's
- ACTRA Software



CITY OF
WEST
DES MOINES

TIMELINE



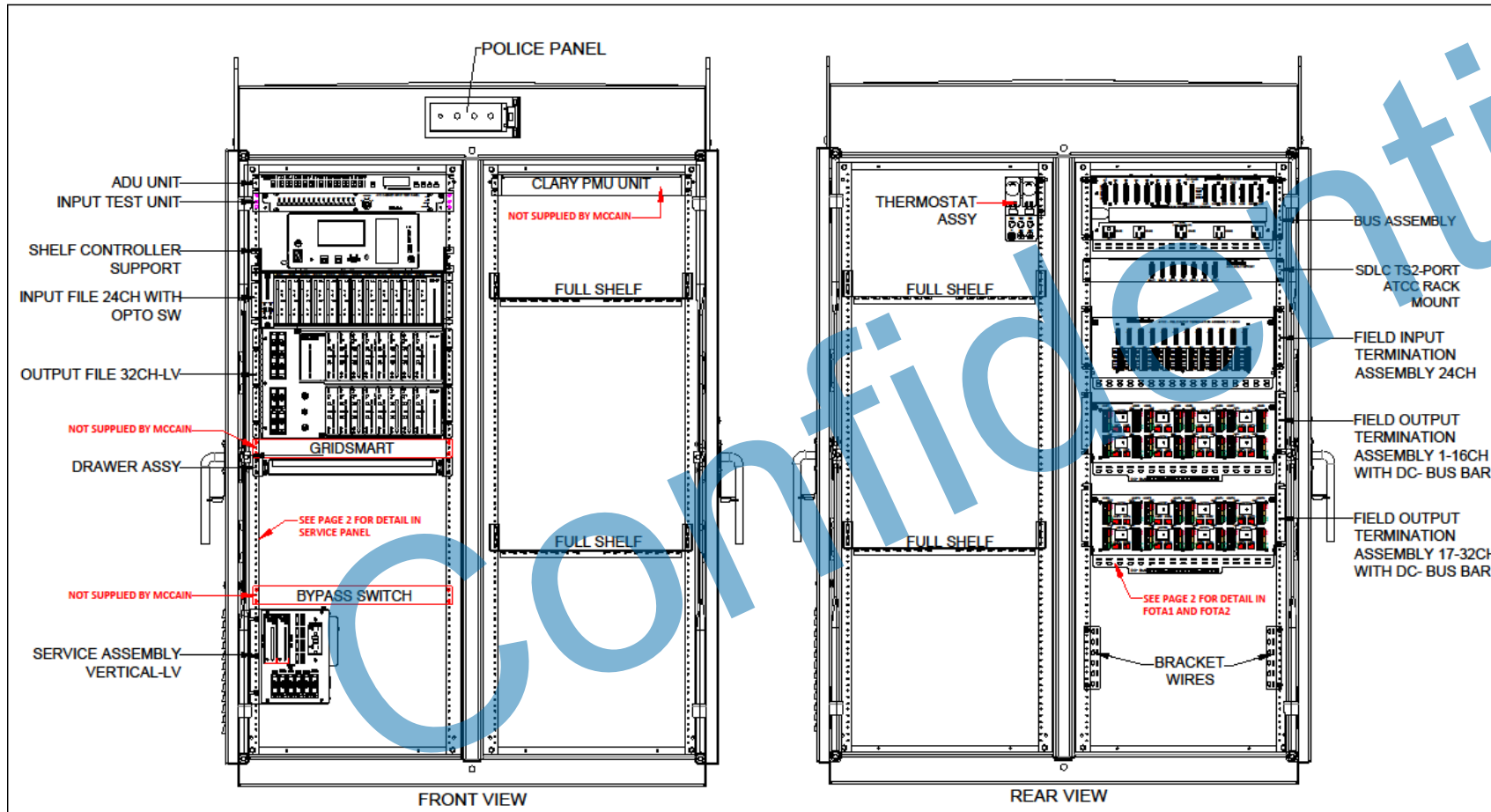
MOVING TO THE FUTURE WISH LIST

- Cabinets ready for the future
- 32-channel output
- Ample room for components
- Improve safety for personnel and public
- Lower LED wattage
- Customize for their needs



CURRENT EQUIPMENT

350i ATCC-LV IOWA OA32CH,(2)FOTA16CH,IA24CH,FITA24CH
HORIZONTAL,SA-HV-V,NATURAL.



- 350i w/ 32-outputs
- FLeX Controller
- Clary DLE for 48vdc & UPS
- GPS Opticom
- Rhythm Adaptive
- Gridsmart Detection
- Rack Mount Switch
- Rack Mount Fiber Box
- Transparency for TMS

GTC SUPPORT

- Provide superior customer service
- Support before the project
- Met customer needs
 - Built a complete ATC cabinet checklist
 - Included in spare parts
- Constant training & education



SWARCO MCCAIN SUPPORT

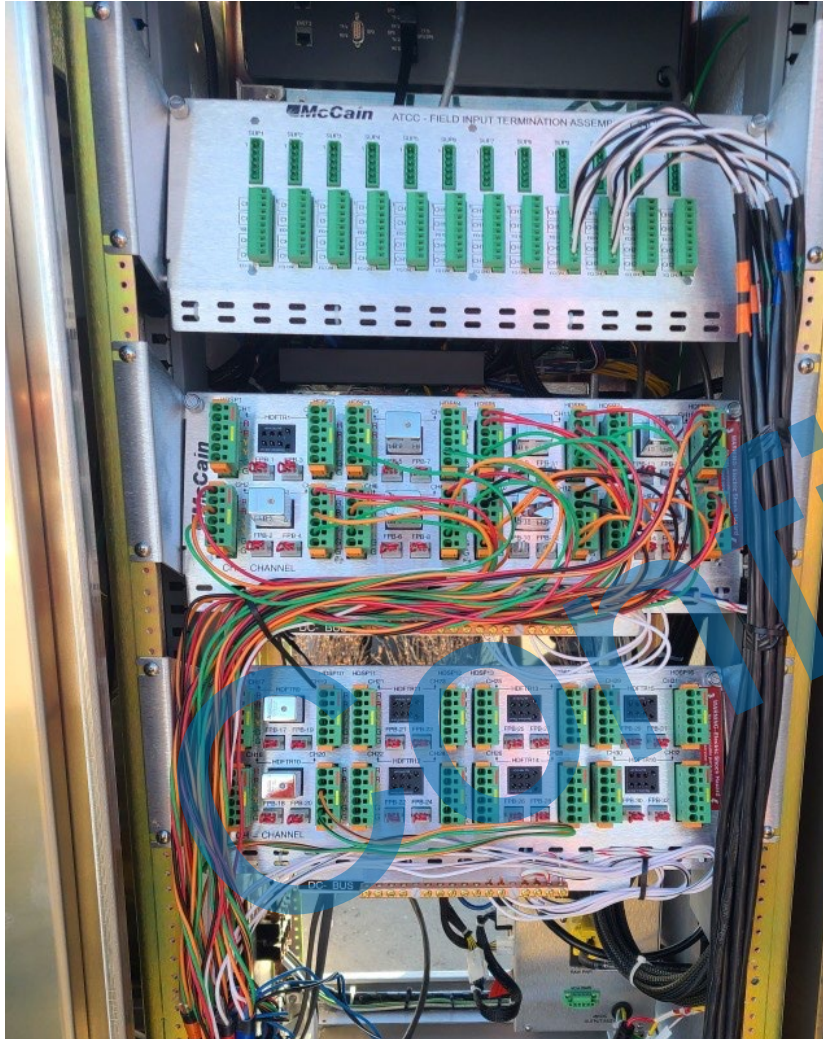
- Progressive with ATCC Technology
- Quality of ATCC
- Great Tech Support
- Competitive pricing
- Flexible to meet WDSM needs

Confidential

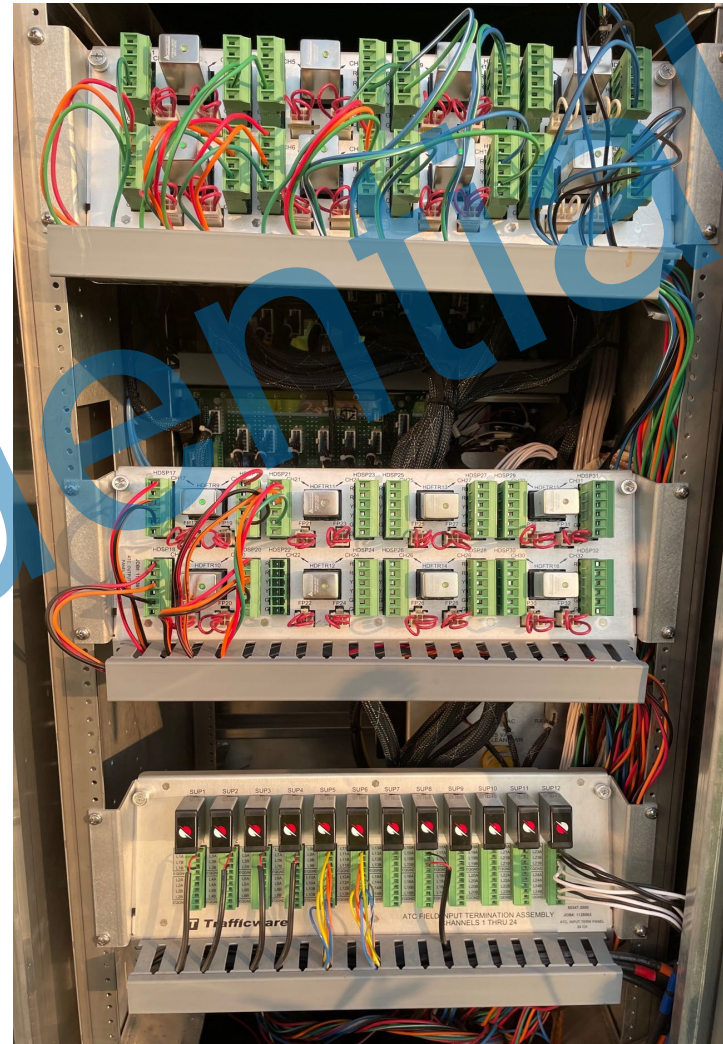
COMPETITORS CABINETS



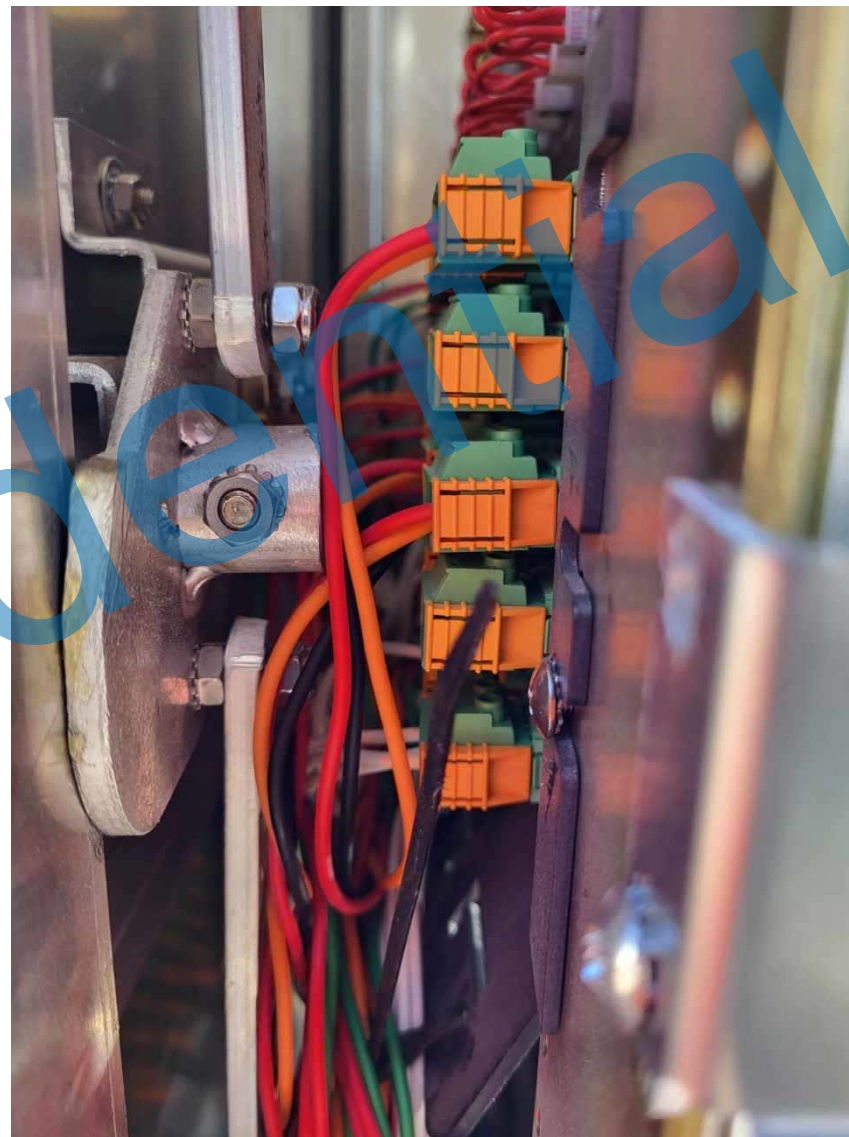
SWARCO McCain, Inc.



Trafficware



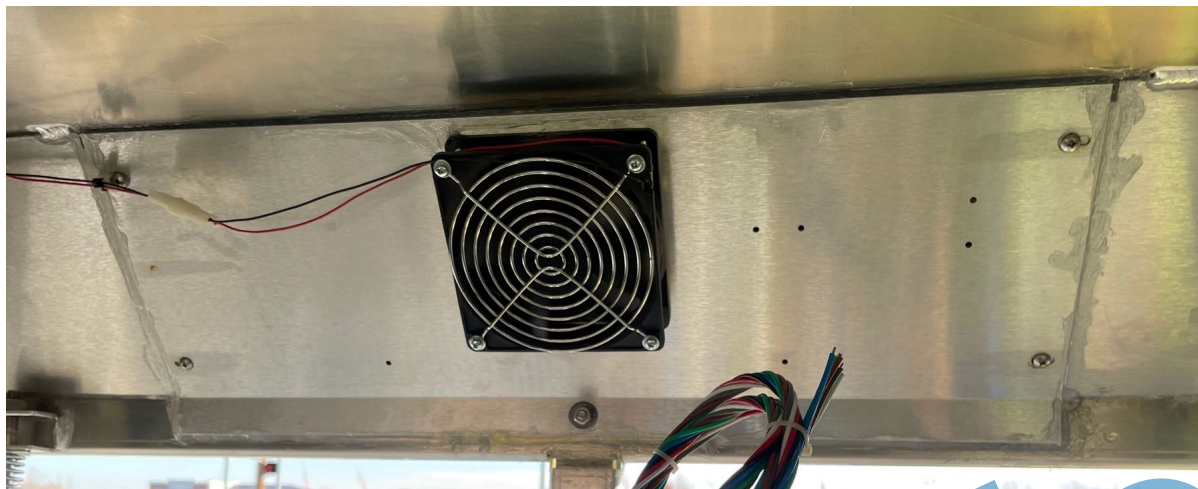
Safetran





Confidential





KNOCKDOWNS



and Grand 10/05/22 07:41:58 AM



SUCCESS STORIES

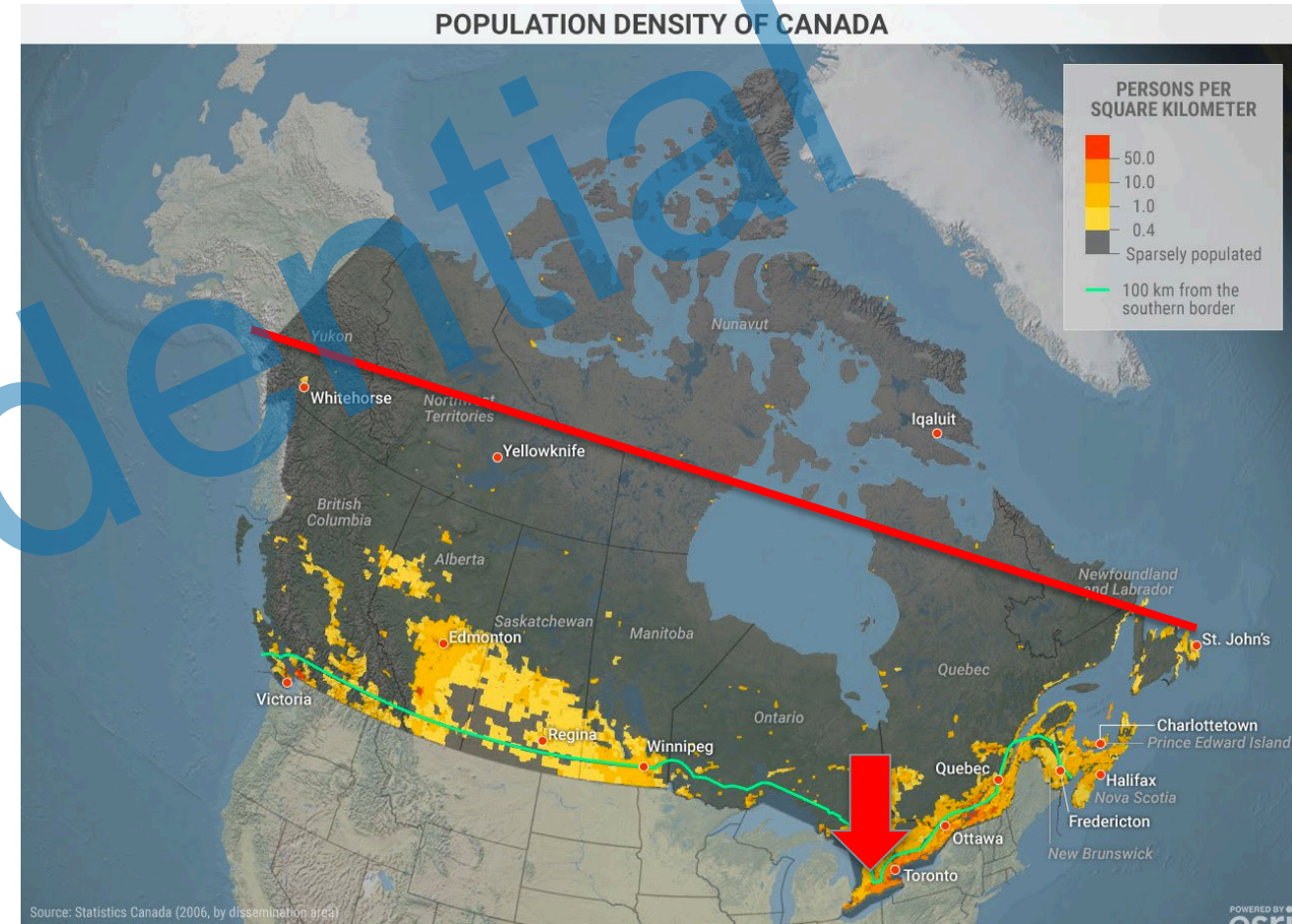
ATC CABINETS GREATER SUDBURY, CANADA
EMPOWER: 2023 Channel Partner Summit

Innovative Traffic Solutions, Inc.

INNOVATIVE TRAFFIC SOLUTIONS, INC.



- December 1999
- 12 wonderful dedicated people
- Stoney Creek, Ont. 10,000 sq ft
- Sales Offices in Calgary, Edmonton and Ottawa



➤ 5,500km Population 38 Million



LOW BID

Confidential



ITS PARTNERS





3501



M



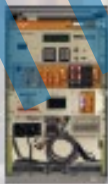
P64



3531



3501



3571



BPC



3521

ATC CABINETS

SMART SOLUTIONS FOR SMART CITIES

PROJECT OVERVIEW

BACKGROUND



The City is centrally located in northeastern Ontario, at the convergence of three major highways.

Located 4.5 hours or 440Km (273.4mi) away from our head office.

It is situated on the Canadian Shield in the Great Lakes including 330 freshwater lakes, and the largest city-contained lake in the world, Lake Wahnapeitea or Wanapitei.



Home of the “Big Nickel” 9m high (30ft) replica of a 1951 Canadian nickel.....and not much else

PROJECT OVERVIEW

PROJECT SCOPE – ATMS + CONTROLLERS



Project Scope

- ATMS Supplier Also to Provide ATC Controllers
- City wide upgrade of 124 intersections over a 4 year period
- Integrate eX2 with successful new ATCC platform
- Database conversion for first initial 10 installations
- On-site support for first 10 installations
- City and Maintenance Contractor training

Existing Equipment

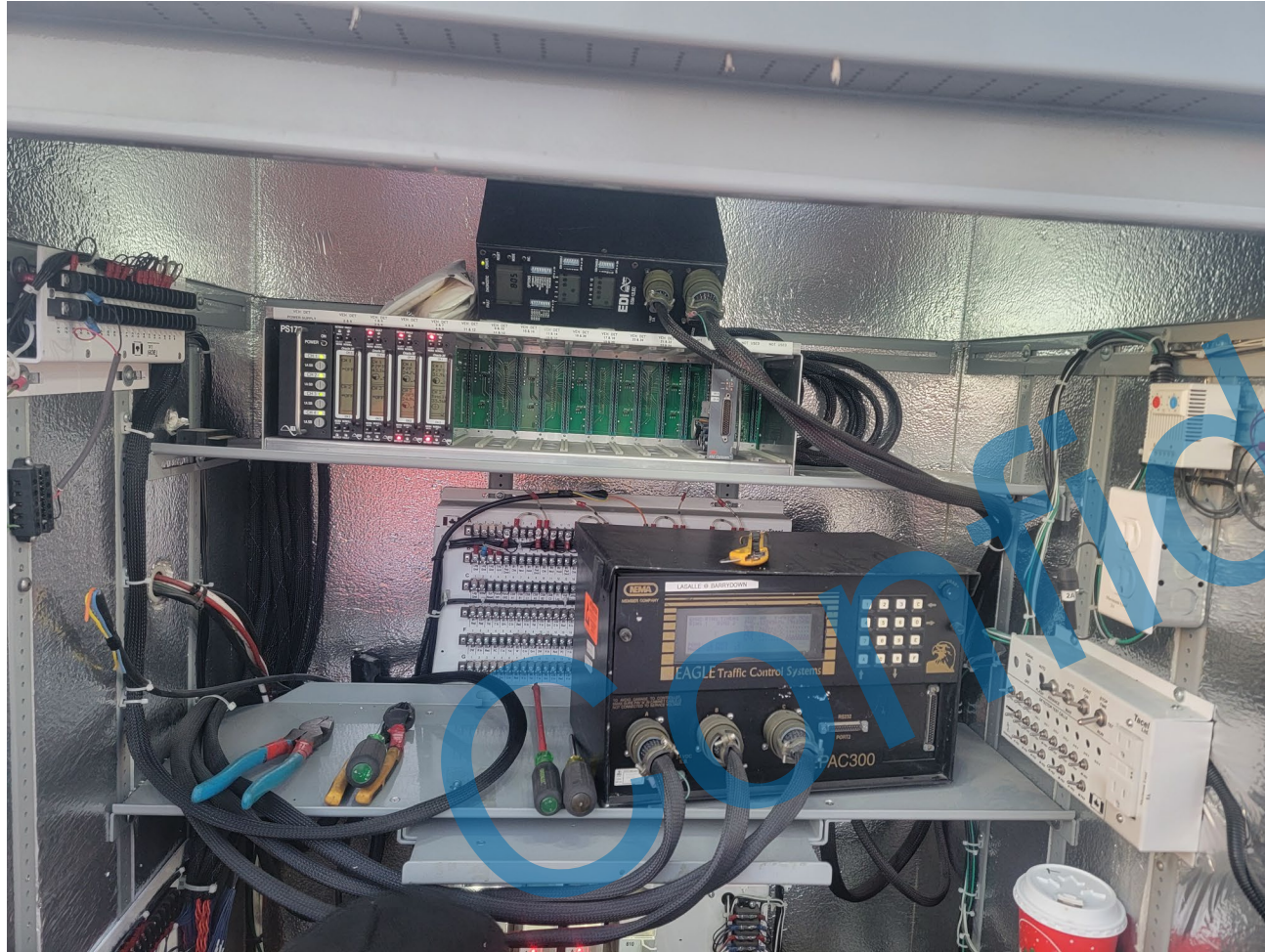
- NEMA TS1/TS2-2 Eagle/Siemens EPAC300-M60
- Existing TACTICS users

Challenges

- Software and hardware delivery challenges

PROJECT OVERVIEW

PROJECT SCOPE – ATC CABINET



Project Scope

- City wide upgrade of 124 intersections 4 year period
- Integrate with new ATC controller...unknown at time
- On-site support for first 10 installations
- Mixture of pad and pole mount cabinets
- City and Maintenance Contractor training

Existing Equipment

- NEMA TS1/TS22 M+G Cabinets

Challenges

- Cabinet base fit existing concrete (30"w x 17"d)
- Single door
- Usable space
- Point to Point vs Serial Communication

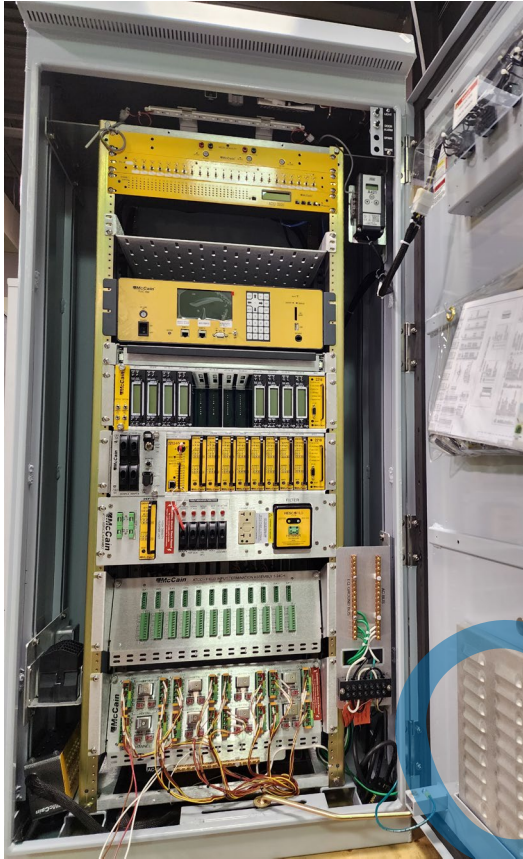
BID SOLICITATION

5.1.5 Errors and Omissions

The City shall not be held liable for any errors or omissions in any part of this Bid Solicitation. While the City has used considerable effort to ensure an accurate representation of information in this Bid Solicitation, the information contained is supplied solely as a guideline for Bidders. The information is not guaranteed or warranted to be accurate by the City, nor is it necessarily comprehensive or exhaustive. Nothing in the Bid Solicitation is intended to relieve the Bidders from forming their own opinions and conclusions with respect to the matters addressed herein.

PROJECT OVERVIEW

PROJECT SCOPE – ITS ATC CABINET SUBMISSIONS



Successes

- ITS Partnership with Sudbury
- ITS provided City and Maintenance and on-site support for first 10 installations
- Swarco McCain/ITS collaboration on the design
- Year 2-4 cabinets to be redesigned M65 Quad door ATC cabinet
- Best Boots on the ground team **ITS and Swarco McCain!!!**

DYNAMIC DUO

SWARCO STEVE

ITS STEVE





